

5 SECURITY SOLUTIONS THAT MAY LEAVE YOU AT RISK



BLUERIDGE
SECURING OUR FUTURE

Do you have a false sense of security?

In the age of active shooter events the number of widgets, products and approaches hitting the market on a weekly basis can be overwhelming, but are these offers leaving some with a **false sense of security**?

Vulnerabilities arise when institutions approach safety and security with a **one-dimensional methodology**, jeopardizing the very security they're hoping to provide.

Don't allow security insecurities to put you at risk. In this e-book:

- Learn about these **5 security solutions** that can jeopardize security **when used independently**.
- Understand **best practices** for active shooter prevention and response with an end-to-end solution, supported by redundancy to build a comprehensive, people first approach.





Don't get us wrong, perimeter protection is a must and one of the most important redundancies to a comprehensive approach to campus safety and security. However, vulnerabilities arise when:

1. Perimeter protection isn't layered across campuses, parking lots, buildings and individual rooms
2. Humans override perimeter protection for convenience. i.e. unlocked gates/doors
3. The threat comes from within

RESEARCH SHOWS



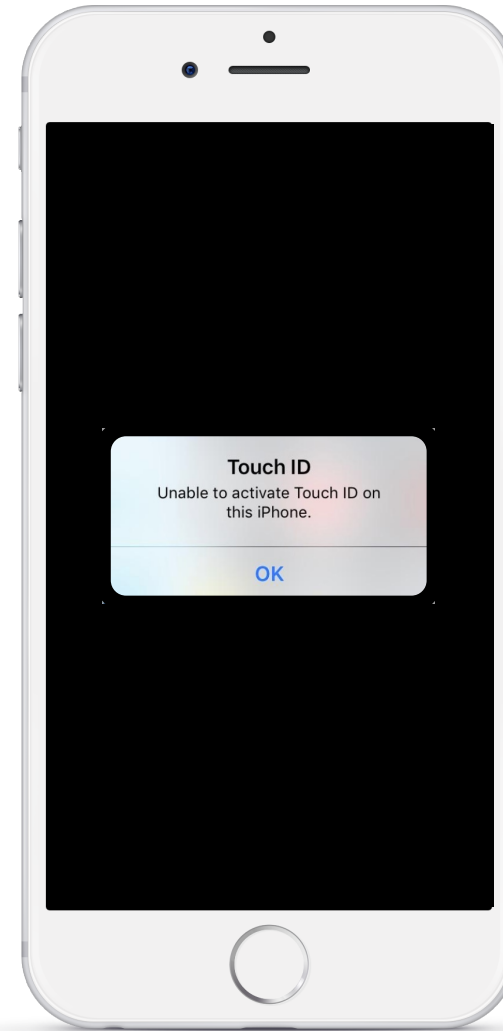
*School Safety Expert, Michael Yorio, North Carolina State University

2

Mobile apps provide new capabilities and increased accessibility, but like perimeter protection, are not a fail safe.

When integrating a mobile app into your safety and security plan it is wise to consider the many factors that have to align for success.

SHORTCOMINGS



1

DEXTERITY

IN A HIGHLY INTENSE & STRESSFUL SITUATION

2

ACCESSIBILITY

ASSUMES THAT PHONE WILL BE ON PERSON, APP IS INSTALLED & UP-TO-DATE

3

NETWORK COVERAGE

THAT CELL OR WIFI SERVICE BE AVAILABLE AT ALL TIMES

4

NO TRACKING

LOCATION & GEO TRACKING ARE NOT ACCURATE IN MANY SITUATIONS

3

Video surveillance cameras offer evidence after the fact but may do little to prevent an incident from occurring. Here are just a few of the shortcomings of a video only approach to security:

1. Lack of proactive prevention or response
2. Must be continually monitored
3. Blind spots can occur

BUT WHAT ABOUT VIDEO ANALYTICS, WEAPON & FACIAL RECOGNITION?

These technologies are still being developed and vetted but are a hopeful future state.

BUT facial recognition does not address the 95% of active shooters that come from within, those who should be in the building.





Active shooter response training is a must in today's environment. However, not all training is created equal.

It's important to understand that there are various levels of training, not unlike the difference between an elementary education and a college degree.



**SPECIALIZE, EVIDENCE-BASED, ON-SITE
TRAINING & DRILLS**



**LOCAL LAW ENFORCEMENT
TRAINING**



ALICE TRAINING

5

According to Campus Security Magazine, 2018 had the greatest number of incidents since 1970 and had the highest number of victims.

With statistics on the rise it is no surprise that schools and institutions look for new ways to provide occupants protection. This revolutionary tactic has been adopted by many districts, while others condemn the practice and increase in weapons on campus.

No matter your stance, the fact of the matter is that this, along with the previous 4 solutions, are reactive in nature. **A proactive approach is needed!**

01

MUST HAVE
ENOUGH
WILLING STAFF
FOR
PARTICIPATION



02

DEXTERITY
IN A
HIGHLY
STRESSFUL
SITUATION

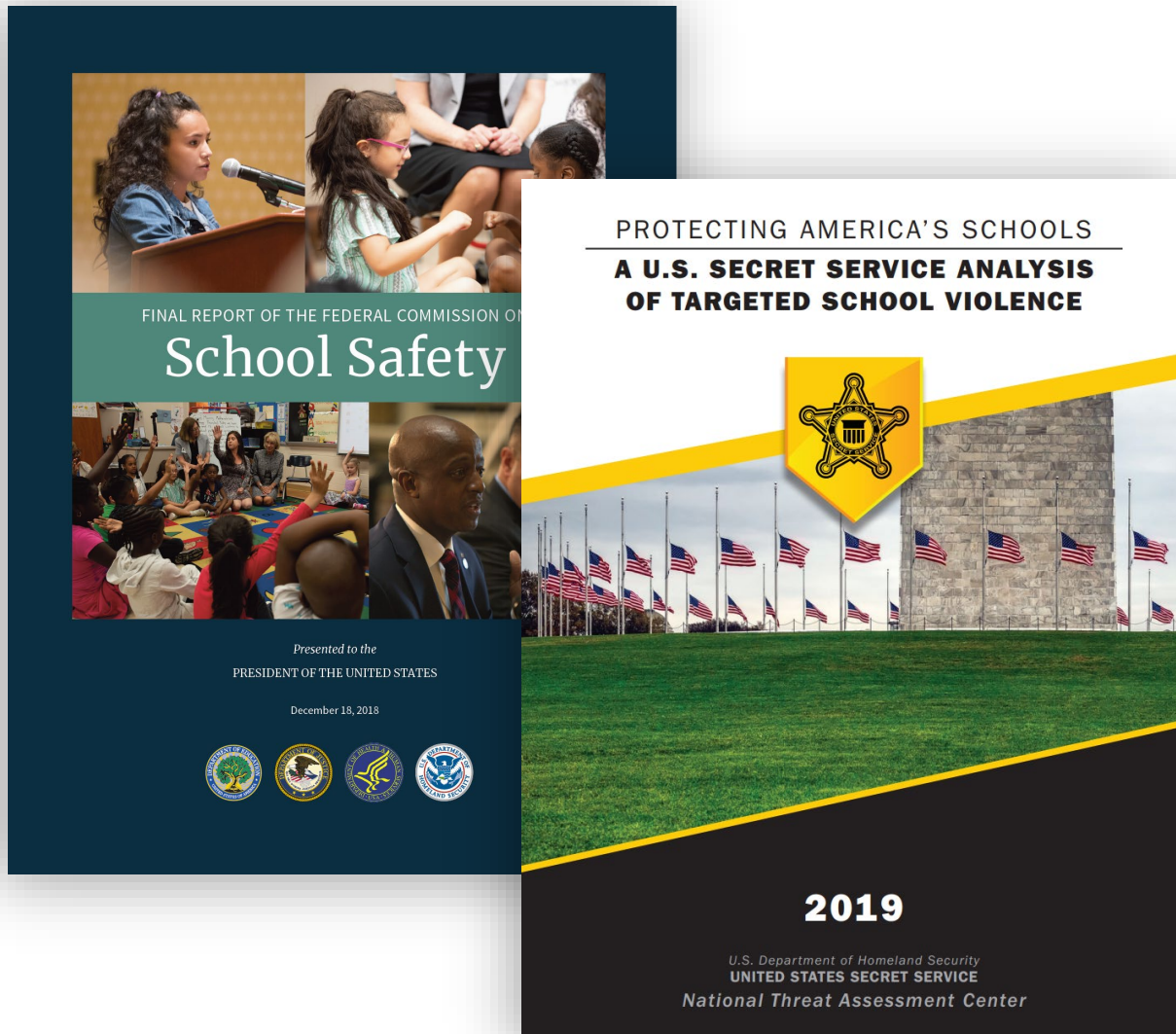


03

LOCATION &
NOTIFICATION
OF THE
INCIDENT
MATTERS



WHAT THE EXPERTS ARE SAYING



“The analysis suggests that many of these tragedies could have been prevented...”

- 2019 PROTECTING AMERICA'S SCHOOLS
UNITED STATES SECRET SERVICE

“School security strategies should use a layered approach that incorporates multiple, reinforcing echelons of policy, programs, and protective measures.”

- 2018 FINAL REPORT OF THE
FEDERAL COMMISSION ON SCHOOL SAFETY

BEST PRACTICES & COMPREHENSIVE STRATEGY

AN END-TO-END SOLUTION FOR PREVENTION & RESPONSE
simple. seamless. strategic.



PREVENTION

- Preemptive awareness, risk identification and de-escalation training for **counselors & faculty**
- **Student** mental health & wellness programs
- **Social media monitoring** & anti-bullying technology



PREPARATION

- Evidence-based active shooter response training
- Life safety policy & procedure **documented & applied**
- **Emotionally safe** training & drilling



PROTECTION

Safe-haven areas for emergency incidents:

- Bullet-resistant doors & hard corners
- Locking and barricading mechanisms
- Protective film
- Emergency injury kits



COMMUNICATION

Integrated alarming technology enabling **simultaneous** notification:

- Campus-wide with visual, auditory and digital broadcasts
- To local law enforcement and first responders
- With geotagging of alarm within 10 feet

CONCLUSION

Do you have a false sense of security?

Independently these solutions leave gaps and vulnerabilities. When layered into a comprehensive approach **for prevention and response**, each tactic works to create redundancies that weave together an **end-to-end solution**.

Additionally, not one of these solutions is **proactive or preventative**. It is imperative to address the root of the issue, mental health.

For more information on the **Mental Health Crisis** see our e-book, [A Quick Guide to Understanding the Mental Health Crisis](#).



BUILD YOUR COMPREHENSIVE PLAN TODAY

INFO@BLUEREFUGE.COM
WWW.BLUEREFUGE.COM



BLUEREFUGE
SECURING OUR FUTURE