





**Christopher Lloyd**

Vice President of Marketing & Communications



**Tiffany Whisner**

Marketing Content Manager



**Cheryl Berry**

Marketing Creative Manager



**Jaclyn Saunders**

Marketing Coordinator



**CéAira Waymon**

Marketing Creative Associate

# Table of Contents

**Celebrating 60 Years of Aspire**  
[page 3](#)

**Patient Success Story: Stephanie Feece**  
[page 10](#)

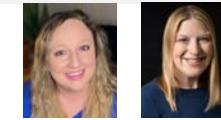
**Faces of Aspire: Jessica Bowen**  
[page 12](#)

**Social Media Hits**  
[page 14](#)

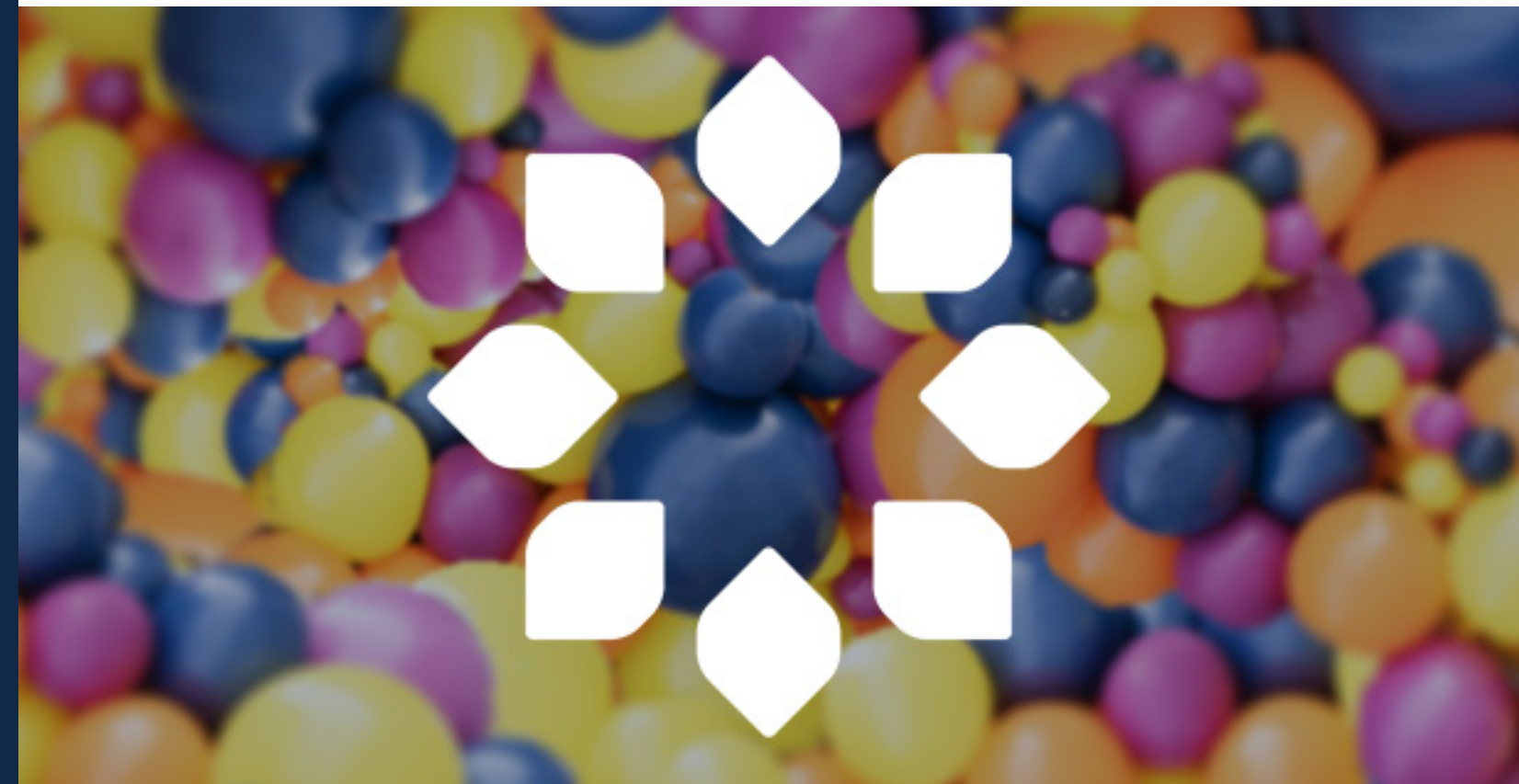
**Aspire News**  
[page 16](#)

**Accent on Compassion**  
[page 19](#)

**Great Job!**  
[page 20](#)



# Celebrating 60 Years of Aspire



“**T**o know the humble beginnings from which we began to where we are today still makes me ask myself, ‘How did we ever do it?’ The answer, of course, is all the great people we had who were part of the enterprise of what would become over all those years and to this day Aspire!”



DeHaven

These are the words of Rich DeHaven, who served as President and CEO of Aspire Indiana Health from 1975 to 2017. During his 43 years at the head of the organization, he led Aspire through several milestones, including the merging of The Center for Mental Health and BehaviorCorp to form Aspire Indiana, Inc. in 2009.

But Aspire’s journey began in 1966 with the founding of The Center for Mental Health – an organization dedicated to serving individuals with serious mental illness under the framework of Indiana’s Community Mental Health Centers (CMHC).

**COMMUNITY MENTAL HEALTH CENTER MOVEMENT**



Scott

“The community mental health center movement started in the early ‘60s, about the same time I was born,” says former Aspire COO and CEO Barbara Scott. “To think that only 60 years ago, people were simply hospitalized for

having mental illnesses, and now they are members of our society with equal rights where they can live, work and play in their community – that is simply amazing!”

The Center for Mental Health opened its doors in Anderson, Ind., in 1966 and later opened a facility in Elwood in 1977 and then in Noblesville. In 1976, Tri-County Mental Health Center opened its doors in Carmel, eventually expanding to Noblesville, Lebanon and Indianapolis.

Aspire Program Manager of Crisis Services LouAnn Lemaire-Pyle has been with Aspire for more than 40 years, having started as an employee at Tri-County Mental Health Center.



Lemaire-Pyle

“I have learned so much through the years and witnessed so much change in the field of mental

health and healthcare in general,” she says. “Those of us in the field witness much sadness and



hardship with the people we serve, but we also have the privilege of sharing in their successes and resilience demonstrated every day in the toughest circumstances.”

The Center for Mental Health and Tri-County Mental Health Center were each dedicated to serving individuals with serious mental illnesses, partnering with state and local agencies, including the judicial system to provide care to a vulnerable community and ensure stability and independence.

“Aspire has spent 60 years helping people navigate behavioral health issues and push past the stigma that involves,” says Andrea Coahran, a systems analyst with Aspire who began with The Center for Mental Health and has been with Aspire for more than 37 years.



Coahran

In 1992, Tri-County rebranded as BehaviorCorp, Inc., reflecting on its expanding services and commitment to meeting the complex needs of Medicaid and Medicare populations.



Johnson

“The consistency and dedication to serve people in our community makes the counties that we serve healthy and stronger,” says Aspire Community Health Worker Jeffrey Johnson, who started with

The Center for Mental Health and has served the organization for more than 40 years. “Aspire has seen so much amazing growth – kudos to Aspire for progress and stability in serving all the communities we work in.”

**Progress House founded**

**1966**

**Rich DeHaven named President and CEO of The Center for Mental Health**

**1976**

**Tri-County rebranded as BehaviorCorp, Inc.**

**1961**

**The Center for Mental Health founded**

**1975**

**Tri-County founded with Larry Burch named President and CEO**

**1992**

**THE MORE YOU CHANGE, THE MORE YOU STAY THE SAME**

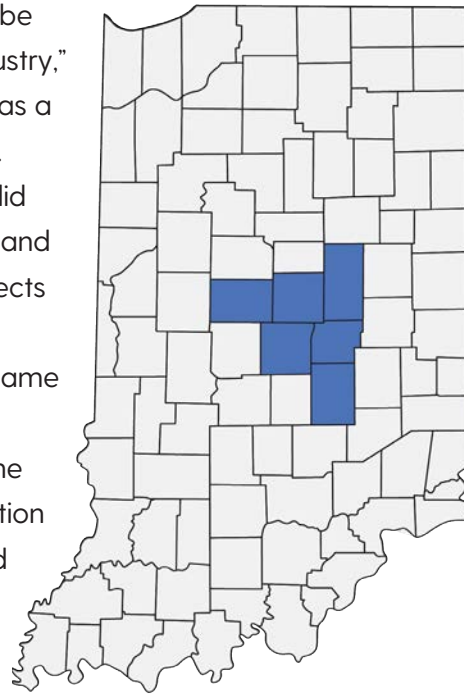
The merging of The Center for Mental Health and BehaviorCorp in 2009 to form Aspire Indiana, Inc. proved significant to the identity of Aspire. Recognizing that mental health is deeply connected to one's physical wellbeing, Aspire set out to offer primary medical care in addition to the behavioral health services it already provided.

"Aspire's decision to take on the provision of primary care meant taking a more integrated approach both for how we viewed the needs of our consumers and how we structured treatment," DeHaven says. "Going through the journey of becoming a FQHC presented new challenges but also opportunities to think outside 'our' box – and seeing challenges as new opportunities has become part of Aspire's DNA."

In 2015, Aspire received certification as a Federally Qualified Health Center (FQHC) Look-Alike, allowing its first medical services with a nurse practitioner-led model with oversight by doctors. Primary care physicians have strengthened Aspire's clinical practices over time, allowing Aspire to provide holistic care to the ever-evolving patient population.

Currently, Aspire operates in six counties across the Hoosier state, providing care to vulnerable populations daily – all due to the rich history and strong roots stemming from The Center for Mental Health and BehaviorCorp and their decades-long dedication to serving Hoosiers.

"Change will always be happening in our industry," Scott says. "Aspire was a major part of my life. While the work we did impacted individuals and families in many aspects of their lives, it also impacted me in the same way. Those who are currently caring for the people and organization of Aspire simply need to know it is their responsibility at the moment. Give it your all, and then be ready to hand it off to someone in the future – even better than it is right now."



**PROGRESS CONTINUES**

Aspire's evolution continued in 2019 when Aspire Indiana, Inc. and Progress House, Indiana's oldest and largest recovery residence, took an unprecedented, united step together. Merging together, the two organizations pioneered the Whole Health Recovery Continuum, an innovative recovery model that brings addiction treatment, behavioral healthcare and medical care under one roof.

"The importance and impact of the merger of The Center for Mental Health and Tri-County Mental Health Center and then having Progress House join Aspire cannot be overstated," DeHaven says. "These decisions

gave Aspire combined resources and new energy to adapt and mobilize to meet human and health needs both effectively and efficiently in newer ways."

**The union with Progress House further integrated Aspire's healthcare model into recovery services, setting a new standard for addiction treatment in Indiana.**

With its expansion and continued diversification of services, Aspire, Indiana, Inc. rebranded to Aspire Indiana Health, actively marketing services to the broader public and reflecting its transformation into a full-spectrum healthcare provider.

Today, Aspire Indiana Health stands as a truly integrated community health system where behavioral health, medical care, recovery services and social support services work in unison and with compassion.

**MOVING FORWARD AS ONE ASPIRE**

"I have had the opportunity to work with various leaders of Aspire in my role as a mental health advocate in the Indiana General Assembly and was honored to speak at the grand opening of Rely Center in Noblesville," says Indiana State Senator Michael Crider. "More recently, I participated in a forum that



Crider

led to Aspire being selected to serve the community mental health catchment area for Hancock and Shelby counties in the District I serve as a State Senator. I have noticed the improvement in access to care that is already evident and believe that the crisis stabilization center at the Noblesville location will continue to add value to the citizens close by."

Moving forward, Aspire is committed to strengthening partnerships with healthcare providers, government agencies and community organizations.



Dardeen

"As the Mobile Crisis Assistance Team (MCAT) Supervisor and Crisis Intervention Team (CIT) Coordinator for the IMPD, I realized early on that the success of our programs is inextricably linked to the strength of our community partners," says

IMPD Sergeant Lance Dardeen. "Our mandate for MCAT is simple yet vital: connect individuals to the mental health services they truly need. By partnering with Aspire, the IMPD has been able to step outside our professional 'silo' and create a genuine bridge between our neighbors and the care they deserve."



2009

**The Center for Mental Health and BehaviorCorp form Aspire Indiana, Inc.**

**Aspire certified as an FQHC Look-Alike**

2015



2017

**Barbara Scott named President and CEO**

2019



**Aspire Indiana Inc. and Progress House merge; renamed Aspire Indiana Health**

Senator Crider, Sergeant Dardeen and Hamilton County Commissioner Mark Heirbrandt were all part of Aspire's opening of Rely Center – a psychiatric urgent care and stabilization center for people experiencing a mental health and/or substance abuse crisis.

"Six decades of Aspire shows the services provided to the community are valuable and a needed resource given that tenure," Heirbrandt says.



Heirbrandt

**"Antony Sheehan's leadership has changed the course of how we service our community and is now more impactful than ever before."**

For 60 years, Aspire has blazed the trail for mental healthcare in Indiana, serving thousands of Hoosiers along the way. For the foreseeable future, Aspire will continue to trailblaze by breaking down barriers to care.

"Having served the health needs of thousands of individuals over these 60 years and the potential to serve the total health needs of thousands in the future is very significant to me," says Duane Hoak, who has been on the Aspire Board of Directors since 1987 when the organization was The Center for Mental Health. "This is strong motivation for me to continue to serve as best I can for the future of Aspire."



Hoak

**Antony Sheehan named President and CEO**

## A WORD FROM ANTONY

Looking back on 60 remarkable years, I am profoundly humbled by the work that we've done, and eager for the incredible future that lies before us. You've read the words of our visionary leaders, dedicated staff and supportive partners who helped build Aspire Indiana Health. To you all, my eternal thanks.

Our journey from a foundational mental health center to a fully integrated community health system is a true testament to the resilience of the communities we serve and the boundless compassion of our team working together as One Aspire. We know we do not do this work alone, and cannot serve without the support of our local, state and federal partners, from elected officials to colleague organizations.

Most of all, my deepest gratitude goes to every patient who has entrusted us with their care and their recovery. Serving you is why Aspire exists.

As we celebrate this milestone together, we recognize we sit at a critical moment. There is no ignoring the challenges we face in navigating a complex public health model – at a time when Aspire has grown unbelievably in reach, scale and complexity. All of us here, including the CEO, are but temporary custodians of the trust that has been given to us.

Today, we don't just honor our rich history; we renew our unwavering commitment to treating the whole person, breaking down barriers to care and



walking alongside our fellow Hoosiers toward a healthier, brighter future for us all. Here's to the next 60.

– Antony Sheehan, President & CEO



**"I had a great experience with Haley! My appointment was efficient, direct, and I walked away relieved that it was all very simple."**

- Actual Patient Feedback

**HALEY CHAMBERS**  
Nurse Practitioner - Primary Care



**"Dr. Sheward is an absolute gem. He was kind and compassionate. He knew what needed to be done, and did just that."**

I couldn't ask for a better experience with Aspire.

- Patient Google Review

**DR. JERRY SHEWARD**  
Medical Director, Psychiatry



**"Michelle was extremely friendly and invited me for conversation. She made me feel very comfortable during my visit; she was non-judgmental and extremely helpful."**

- Real Patient Feedback

**MICHELLE MCDOWELL, ANCC**  
Family Nurse Practitioner



**"Dr. Dwyer is a great doctor besides being a great friend! Thank you for helping me take good care of myself!"**

- Patient Google Review

**DR. DAVID DWYER**  
Physician, Primary Care



# Patient Success Story: Stephanie Feece



Stephanie Feece has been a patient at Aspire's Elwood Health Center since she moved to Elwood in 2023 with her son to be closer to her mother and sister.

Aspire Family Nurse Practitioner Michelle McDowell has provided Stephanie with attentive, quality medical care in a way that has allowed her to feel better and address additional medical concerns.

"I feel better than I've felt in years," Feece says. "I'm finally getting help both physically and mentally because I get the care I need from Aspire."

With McDowell's assistance, Stephanie has been able to connect with needed behavioral healthcare. Prior to Aspire, she had tried several therapists but never found a good match. With a recommendation from McDowell, Stephanie found a behavioral health therapist at Aspire who she connects with and receives care from.

Stephanie's positive experience with Aspire inspired her to invite her mother – who had previously been driving to a primary care physician several hours away – to Aspire's primary care services.

"We were driving two hours north for my mother's primary care before Aspire, but now, my mom is receiving the **quality care** she needs in Elwood, all **because of Aspire**," Feece shares.

She is grateful for the care received and the experience she gets at each appointment.

"Everyone shows genuine concern from the moment you arrive."

Aspire's Elwood Health Center is located at 10731 SR 13. To make an appointment, call (765) 552-5009. To see a list of all Aspire Health Center locations, visit: <https://www.aspireindiana.org/about/locations>.



# Aspire Indiana Health

When should you schedule your Annual Health Visit?

Once every 12 months – even if you're not sick.

**NEED TO SCHEDULE?**

Visit us online at:  
<https://www.aspireindiana.org/>



# Faces of Aspire: Jessica Bowen

**CONTACT CENTER COORDINATOR**



Contact Center Coordinator Jessica Bowen started her journey with Aspire a little more than two years ago. The contact center connects callers with any service Aspire provides – from primary care and behavioral health to addictions support, housing, employment, and crisis services.

“We’re a hub of information so we are constantly

double-checking our website for updates, making sure we’re current on everything Aspire offers,” she says. “We recently opened Rely Center and new offices in Shelby and Hancock counties. Some Same Day Access times have also changed, and we now manage our website’s live chatbot AVA, so the contact center is responsible for keeping up to date with all of Aspire.”

Bowen originally started with Aspire as a patient access specialist for the contact center and was later promoted to coordinator. Prior to Aspire, Bowen spent much of her career working in the medical field, specifically in mental health.

“I’ve always been invested in helping people,” Jessica says. “My brother has cerebral palsy and is paraplegic so I grew up helping him out and later became his guardian. Professionally, I’ve spent many years working with elderly in mental health and working with children in special needs programs.”

“I get to connect with people when they are stressed or overwhelmed and help them find the support they need for whatever they are facing,” she continues.

“Being able to say ‘we can see you today,’ and hearing the relief in their voice is so rewarding.”

Outside of work, Jessica is dedicated to her family and community. She sits on the board and volunteers for her local branch of Keep America Beautiful, an organization that provides community education to the local schools for recycling education and taking care of the environment. Keep America Beautiful provides services for the community such as maintaining a recycling center, community flower boxes and organizing roadside cleanups.

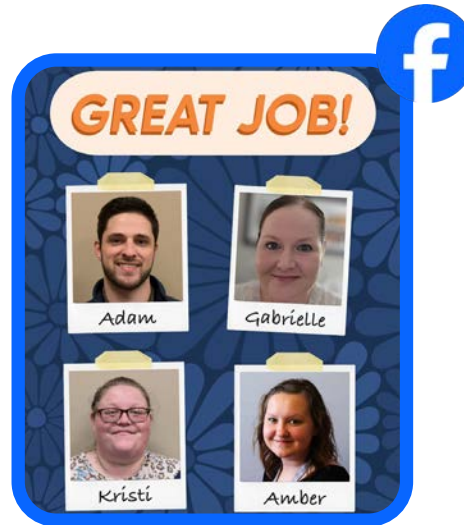
When she isn’t volunteering in her community, Jessica enjoys spending time with her husband and two daughters.





# Social Media Hits

A LOOK BACK AT OUR TOP SOCIAL MEDIA HITS IN APRIL!



# Sign up for the Recovery Rising Newsletter!

## RECOVERY RISING

Please join us in celebrating the strengths and successes of individuals in recovery. We invite you to help us honor and witness their progress and resilience.



[CLICK HERE TO SIGN UP!](#)



# Aspire News

## JOIN ASPIRE TO WALK FOR ARTHRITIS

Join Aspire Chief Medical Officer Dr. Holly Oh and the Aspire team at the [2026 Walk to Cure Arthritis!](#) Dr. Oh will serve as this year's Medical Honoree for the premier event of the arthritis community committed to conquering arthritis.

The event takes place on May 15 at Conner Prairie, located at 13400 Allisonville Road in Fishers, Ind. It starts at 6 p.m., with activities, food and a live performance from Kid Kazooey. The welcome and awards program begins at 7:15 p.m., followed by the walk at 7:45 p.m. The event ends at 8:45 p.m.

Walk to Cure Arthritis raises money to advance arthritis treatments and find a cure, develop resources and take action to improve people's lives.

[We look forward to seeing you on May 15!](#)

**MEET ASPIRE INDIANA HEALTH TEAM CAPTAIN**

**WALK to CURE ARTHRITIS**  
Arthritis Foundation

May 15, 2026  
Conner Prairie

SCAN ME

**Dr. Holly Oh**  
Aspire Chief Medical Officer

Dr. Holly Oh is a pediatrician and seasoned community health advocate who is a preeminent figure in developing innovative models of healthcare delivery to the people who need them most.

## SAVE THE DATE FOR MENTAL HEALTH MATTERS 5K

Get ready to step up for the Mental Health Matters 5K! This is Aspire's community-wide race and wellness event, designed to reduce stigma, raise awareness, and generate meaningful charitable support for Aspire's mental health services, crisis services, and Rely Center programs.

Hosted at Conner Prairie, the event brings together runners, walkers, mental health advocates, corporate teams and families in a high-energy, inclusive environment.



**Make sure to save the date!**  
**September 19, 2026**  
**Conner Prairie, 13400 Allisonville Road, Fishers**



# The Power of Monthly Giving

**Your commitment to monthly giving is one of the most powerful and reliable ways to support Aspire's mission.**

By becoming a recurring donor, you:

- Provide a consistent source of funding essential for long-term planning.
- Help support vital programs that make a big difference for many of our Indiana neighbors.
- Create a foundation for Aspire to expand our reach with confidence.
- Assist with barrier busters like housing, employment, and so much more!

The size of your gift doesn't matter. Whether you give \$10 or \$100 each month, your commitment ensures we can invest in sustainable solutions and expand our impact where it's needed most. And, you can designate your giving to the area of your choice.

Please join our growing community of monthly donors – **Compassion Advocates** – today, and witness firsthand the compounding good your ongoing support makes possible.





### KIDS TALK RECEIVES GRANT AWARD

Congratulations to Kids Talk, the recipient of this year's Women in Philanthropy Grant from the Madison County Community Foundation! The Women in Philanthropy Luncheon brings women together to support programs that benefit women and children in Madison County as well as honoring and recognizing nonprofit organizations and members of the community.



Valdez

"We feel honored," said Denise Valdez, director of Kids Talk. "There are a lot of great organizations doing work in this community, and we were among two other great organizations who were finalists, so we feel very honored."

The other finalists were Operation Love Ministries and Bloom Madison County. Including Kids Talk, \$30,000 was awarded between the three organizations. Kids Talk opted to give a portion of the grant money to the other finalists.



### ASPIRE PARTNERS WITH INVEST HAMILTON COUNTY

Aspire is proud to be in partnership with Invest Hamilton County (IHC), with support from the Hamilton County Commissioners, for the launch of Rise and Reskill, a new workforce training program designed to help individuals in recovery gain and retain meaningful employment.

"The connection between recovery and meaningful employment cannot be overstated," Aspire Indiana Health President and CEO Antony Sheehan says. "Growing demand across industries, combined with evolving work requirements, means there are real opportunities for individuals in recovery to find purpose through work. When people have a reason to show up every day and see the impact of their contribution, outcomes improve – for them, their families, and our entire community."



Sheehan

Rise and Reskill is open to individuals in recovery from substance abuse who are seeking career training and employment support.



### ACHIEVEWELL 5 STAR SPOTLIGHT

Aspire is proud to be recognized as a 5 Star AchieveWELL recipient by the Wellness Council of Indiana, which recognizes elite Indiana organizations that have made employee wellbeing a priority!



Aspire Manager of Workplace Wellbeing Kristin Lamb was recently spotlighted to speak about Aspire's growth in the evolution of its wellness initiative and offer takeaways for how to improve employee health and wellbeing.



[AchieveWELL](#) is the Wellness Council of Indiana's workplace wellness assessment, evaluation and recognition program. The 5 Star level of AchieveWELL recognizes those organizations that have experienced noteworthy growth in the evolution of their wellness initiative and embrace it as part of their business strategy.

### ACCENT ON COMPASSION



### Accent on Compassion

In [last month's Accent on Compassion feature](#) by Aspire Indiana Health President and CEO **Antony Sheehan**, he highlighted Aspire Chief Legal Counsel David Jose, who is helping ensure Aspire's mission is supported, protected and able to grow in an increasingly complex world.



# Aspire Indiana Health

An Annual Health Visit gives you and your care team the chance to review your overall health and catch health issues early – before they become serious.

**NEED TO SCHEDULE?**  
Visit us online at:  
<https://www.aspireindiana.org/>



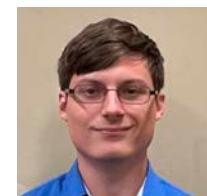
# Great Job!

**GREAT JOB RECOGNITION FOCUSES ON OUR PEOPLE, PATIENTS & PARTNERS.  
TO SEND IN YOUR NOMINATION, CLICK THE BUTTON BELOW.**



**Cortnie Hayes, Patient Access Specialist**, believes that our “customer/client” is also our coworker. It takes a special person to impart knowledge in the manner

she does. Her kindness toward me (newest member of the team) has made the work environment much more pleasant and has helped me through many stressful moments. She deserves to be recognized.



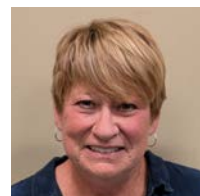
**Michael Taylor, Care Coordinator/ Life Skills Instructor Youth & Family HCBS**, did a great job supporting a child who was having a mental health crisis and supporting

the child’s mother and family. He reached out for additional support and was able to help facilitate the child getting additional help while keeping everyone safe.



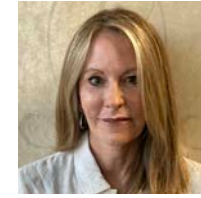
**Courtney Harvey, Licensed Clinical Therapist**, has gone above and beyond with coordinating opportunities to shadow her. She has communicated, followed up

and ensured that many shadow opportunities took place. She stays after the session and debriefs and explains everything so well. Extremely thankful for her patience, guidance and willingness to help.



**Teri Hall, Staff Nurse**, has been commended for her excellent work regarding the laboratory’s documentation, organization and cleanliness during a site visit by United Health Care to the Lebanon Health Center.

The auditor’s final remark before departing was, “Please inform your nurse that I have never encountered such an organized and well-documented laboratory.”



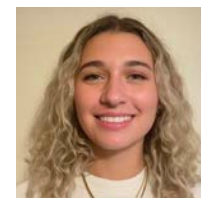
**Amy Doyon, Nurse Practitioner Psychiatric**, took a new Psychiatric-Mental Health Nurse Practitioner (PMHNP) under her wing during the onboarding process. She has been a valuable resource and has given encouragement and direction when needed. Amy made the new employee feel supported and valued.



**Tyler Niedermeyer, Pre-Doctoral Intern**, went above and beyond the requirements of his internship by co-presenting a webinar to the Indiana Psychological Association, providing education to psychologists in Indiana about how to administer culturally competent assessments of neurodevelopmental disorders for individuals who are Deaf or Hard of Hearing (DHH).



**Guy Maynard, Pre-Doctoral Intern**, went above and beyond the requirements of his internship by co-presenting a webinar to the Indiana Psychological Association, providing education to psychologists in Indiana about how to administer culturally competent neuropsychological assessments for individuals who are Deaf or Hard of Hearing (DHH).

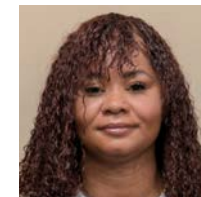


**Hannah Hussey, Pre-Doctoral Intern**, went above and beyond the requirements of her internship by co-presenting a webinar to the Indiana Psychological Association, providing education to psychologists in Indiana about factors influencing psychological assessment validity and interpretation for individuals who are Deaf or Hard of Hearing (DHH).

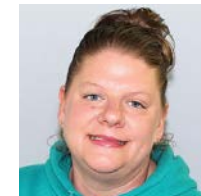


**Jessy Brown, Patient Access Specialist**, is an exemplary employee who dedicates 110% to every task she undertakes. She maintains an outstanding rapport with her peers, community partners and colleagues.

Jessy excels at sharing her knowledge and is consistently willing to assist a colleague when needed. Aspire is lucky to have Jessy as a part of our team.



**Latasha Bradley, Certified Medical Assistant**, is an exceptional medical assistant. Latasha is dedicated not only to her provider but also to her patients and colleagues. Latasha has cultivated an outstanding professional relationship with her provider and consistently demonstrates a willingness to help navigate challenging situations as they emerge.



**April Boles, Crisis Care Coordinator**, did a great job helping facilitate a direct admission to the hospital for a teen client in crisis. She was very communicative with the client’s therapist, and her frequent updates helped the client and his mother feel seen and heard. April was very professional and worked quickly to help the client get what he needed.



**Jessica Rasmussen, Clinical Director-Integrated Behavioral Health**, went above and beyond her role by working diligently on developing and delivering training materials for the new Ethics Consultation Service (ECS) recently launched at Aspire. She was instrumental in shaping the direction of the ECS and helping train consultants to provide this valuable service to our staff.